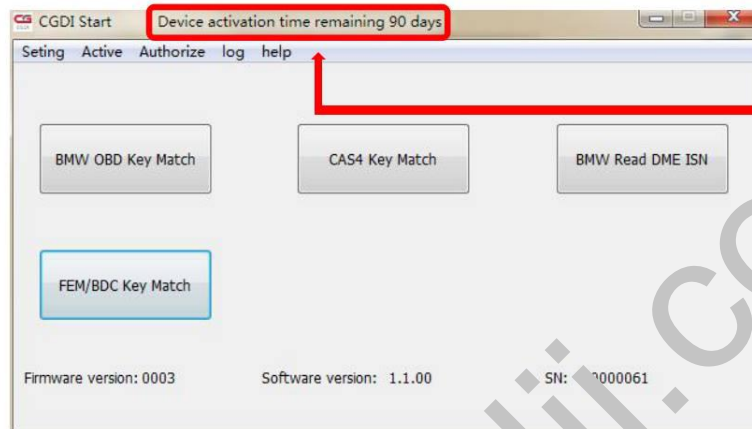


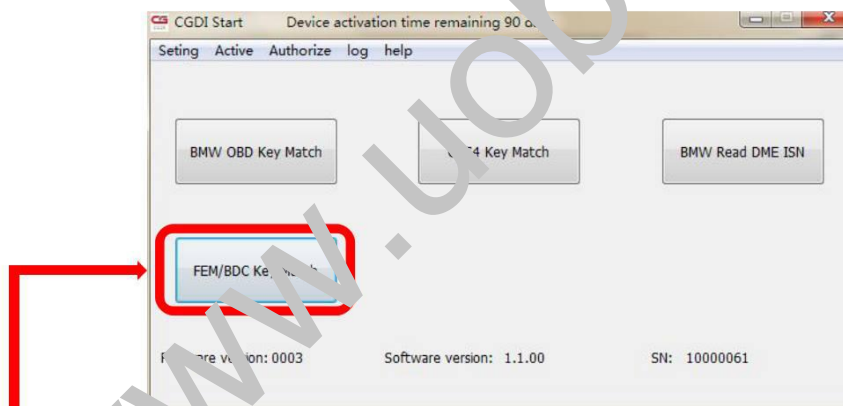
CGDI Prog FEM / BDC Authorization Procedures

Step 1. Only after CGDI Prog is activated, can the user obtain authorization.

Pls be attention : Can authorize other functions after devices activated | | |



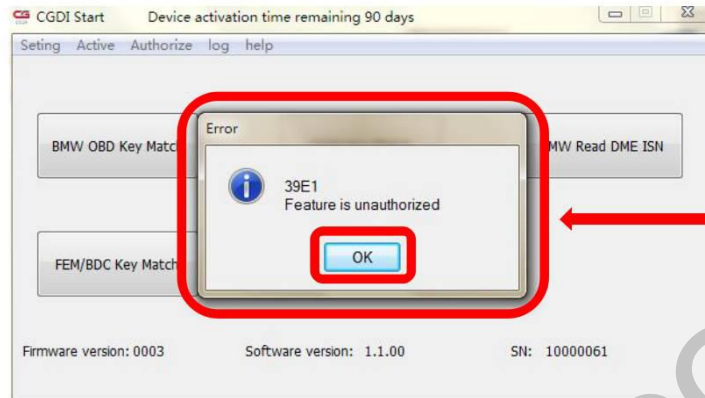
Step 2: Click on "FEM/BDC Key Match".



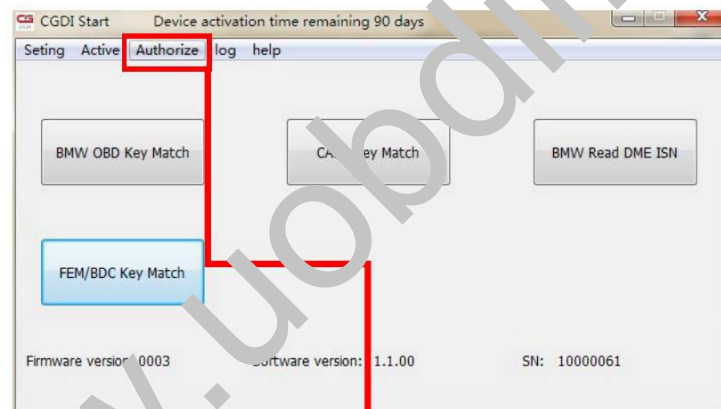
after open software, click "FEM/BDC Key Match"

Step 3: Click "OK" to authorize.

**show "Feature is unauthorized", its mean the function not active yet
click "confirm" to contact manufacturer**



Step 4: Click "Authorize".

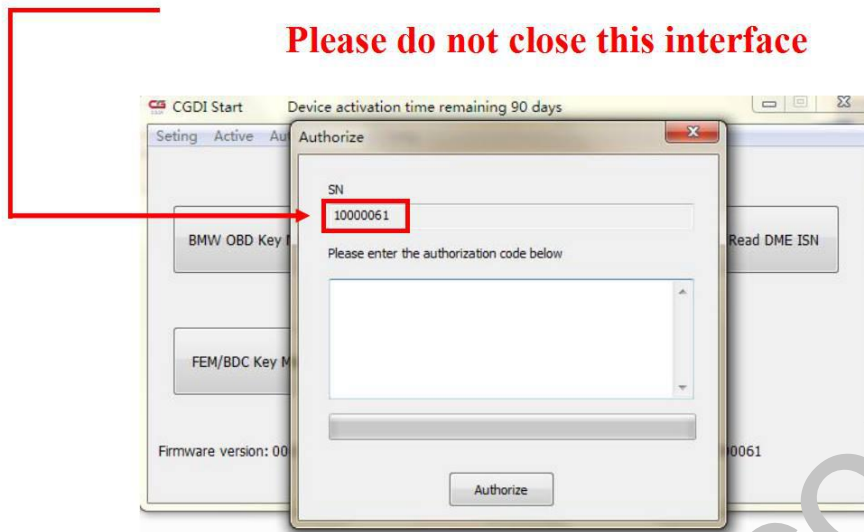


delete "Authorize", click to enter

Step 5: Copy the SN and send it to the supplier (<http://www.uobdii.com/>),

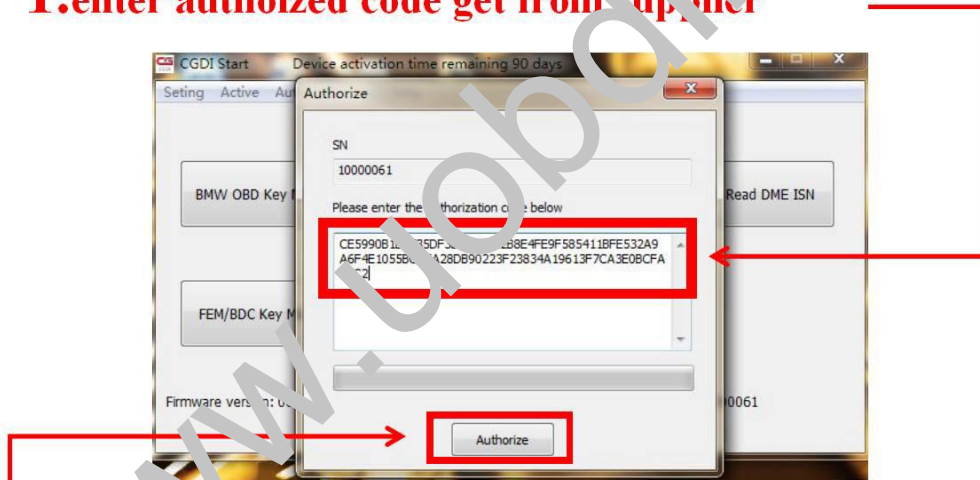
copy this SN code and send to seller

Please do not close this interface



Step 6: Input the authorization code and click on "Authorize"

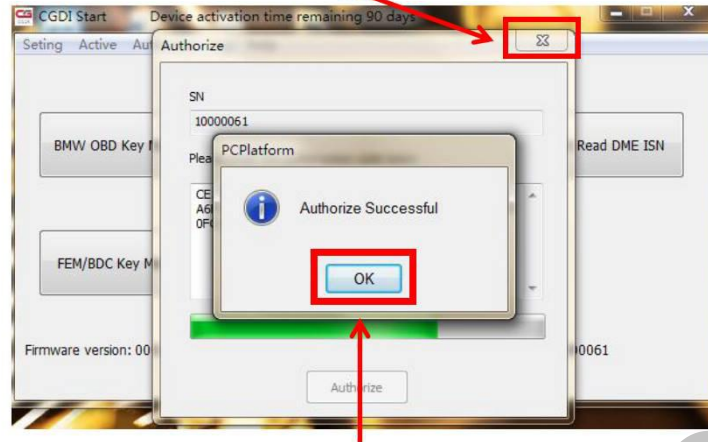
1. enter authozied code get from supplier



2. finished entering, click "Authorize"

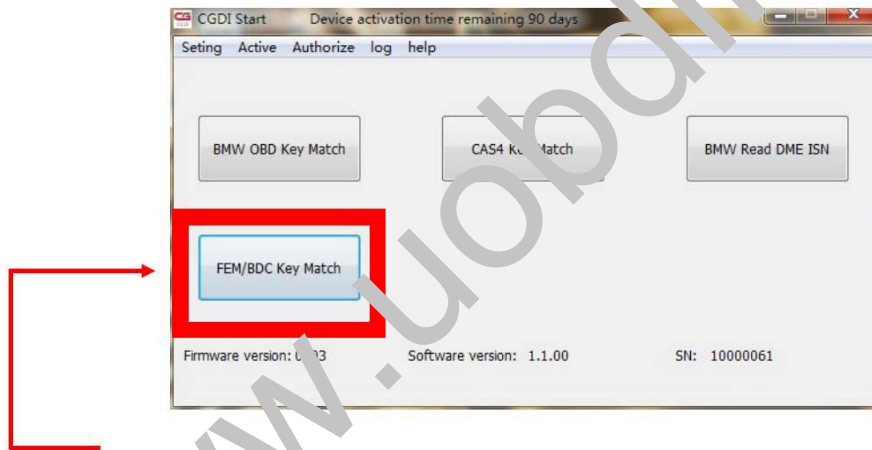
Step 6: Authorization successfully.

2.click“×”, take Out of this interface



1.show“Authorze Successful”, click“OK”

Step 7: Restart CGDI Start, click on "FEM/BDC key match" to enter.



restart software, select“FEM/BDC Key Match”, click”enter”

Step 8: This is FEM/BDC key match main interface.

